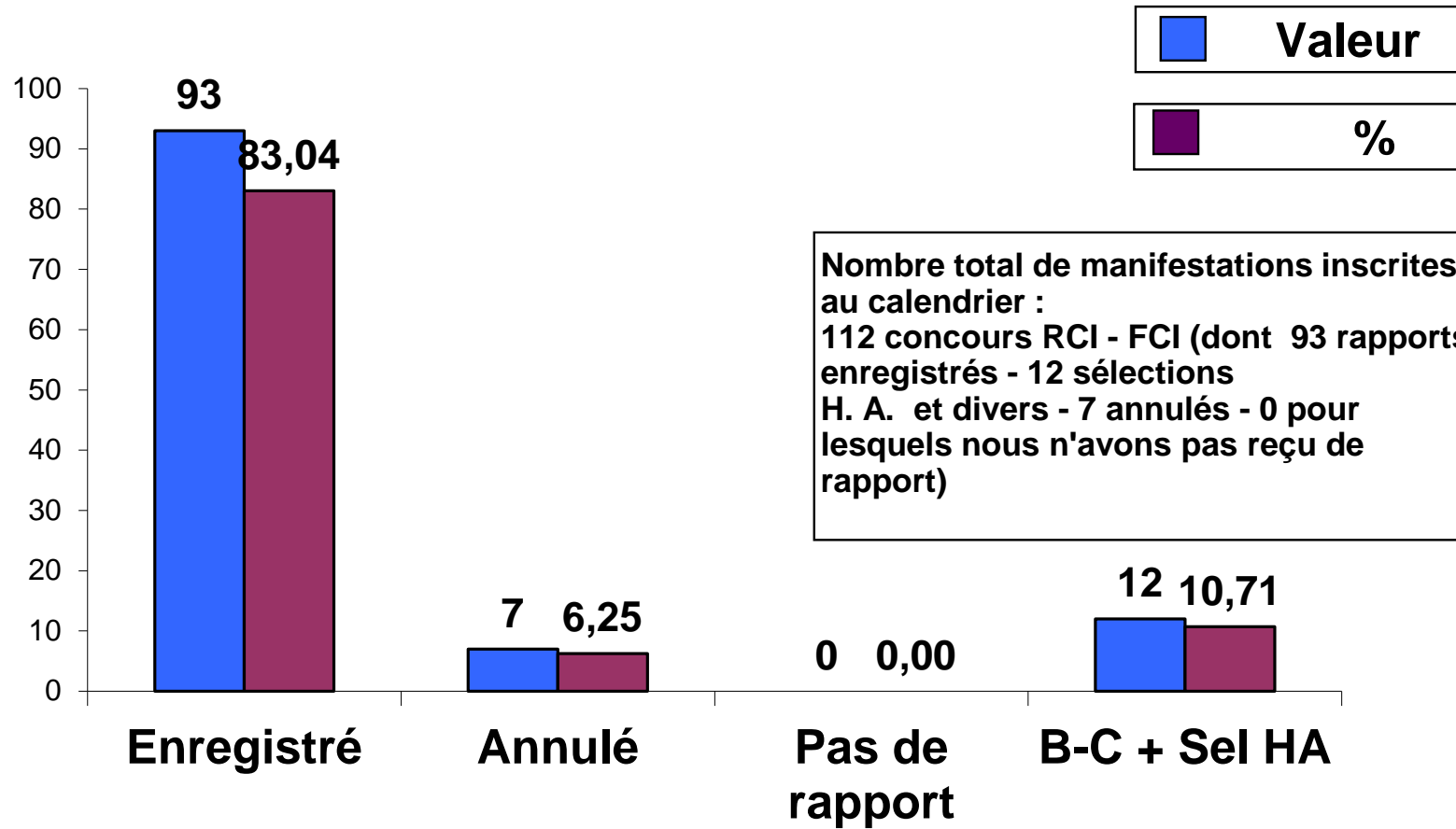


# RAPPORTS 2011



### Tableau comparatif des Races 2010/2011

Races	RCI-FCI 2010	RCI 2011	FCI 2011	RCI - FCI	+	-
<i>BA</i>	891	543	323	866	-25	
<i>BBM</i>	432	388	33	421	-11	
<i>BBG</i>	21	15	4	19	-2	
<i>BBT</i>	30	23	2	25	-5	
<i>BB Laek</i>	2	0	0	0	-2	
<i>Beauce</i>	40	20	3	23	-17	
<i>Brie</i>	6	16	1	17	11	
<i>Rott</i>	89	68	15	83	-6	
<i>Bouvier</i>	10	6	7	13	3	
<i>Boxer</i>	99	60	36	96	-3	
<i>Dob</i>	91	61	21	82	-9	
<i>Hov</i>	15	3	12	15	0	
<i>Schn</i>	12	5	0	5	-7	
<i>B Blanc S</i>	34	13	28	41	7	
<i>B Holl</i>	22	23	4	27	5	
<i>B Pic</i>	4	5	3	8	4	
<i>Border Collie</i>	4	2	5	7	3	
<i>Golden retr.</i>	0		1	1	1	
<i>Labrador</i>	10		9	9	-1	
<i>B Australien</i>	0			0	0	
<i>Loup Tchèque</i>	2		1	1	-1	
<i>Airedale</i>	15	5	14	19	4	
<i>Caniche</i>	1			0	-1	
<i>Cané Corso</i>	0	1		1	1	
<i>Cavalier King Ch</i>	1		0	0	-1	
<i>Terrier Noir</i>			2	2	2	
	<b>1831</b>	<b>1257</b>	<b>524</b>	<b>1758</b>	<b>-73</b>	

## RCI ANNEE 2011

<b>121</b>	CONCOURS INSCRITS AU CALENDRIER	
<b>93</b>	CONCOURS ENREGISTRES	76,86%
<b>12</b>	BC + SELECTIONS TRACEURS et HA	9,92%
<b>0</b>	PAS RECU DE RAPPORT	0,00%
<b>13</b>	SANS RAPPORT SUR LE CONCOURS OU HA	10,74%
<b>7</b>	ANNULES	5,79%

### ENGAGES PAR CATEGORIE

<b>1266</b>	CERT	RCI 1	RCI 2	RCI 3
	<b>230</b>	<b>258</b>	<b>212</b>	<b>566</b>
EXC	24	12	4	9
TB	59	38	47	140
B	75	101	84	266
AB	16	33	20	42
NC	56	74	57	109
	230	258	212	566

	CERT	RCI 1	RCI 2	RCI 3
	18%	20%	17%	45%
EXC	10%	5%	2%	2%
TB	26%	15%	22%	25%
B	33%	39%	40%	47%
AB	7%	13%	9%	7%
NC	24%	29%	27%	19%

## FCI ANNEE 2011

### ENGAGES PAR CATEGORIE

<b>510</b>	CERT	FCI 1	FCI 2	FCI 3
	<b>46</b>	<b>64</b>	<b>51</b>	<b>349</b>
EXC	12	8	10	77
TB	16	15	12	125
B	7	17	12	65
AB	10	8	7	19
NC	1	16	10	63
	46	64	51	349

	CERT	FCI 1	FCI 2	FCI 3
	9%	13%	10%	68%
EXC	26%	13%	20%	22%
TB	35%	23%	24%	36%
B	15%	27%	24%	19%
AB	22%	13%	14%	5%
NC	2%	25%	20%	18%

## RCI ANNEE 2010

<b>121</b>	CONCOURS INSCRITS AU CALENDR.
<b>101</b>	CONCOURS ENREGISTRES
<b>5</b>	BC + SELECTIONS TRACEURS et HA
<b>13</b>	SANS RAPPORT SUR LE CONCOURS
<b>7</b>	ANNULES

### ENGAGES PAR CATEGORIE 2010

<b>1348</b>	CERT	RCI 1	RCI 2	RCI 3
	<b>239</b>	<b>333</b>	<b>216</b>	<b>560</b>
EXC	23	11	2	14
TB	65	68	48	159
B	82	132	98	271
AB	21	34	26	25
NC	48	88	42	91
	239	333	216	560

<b>439</b>	CERT	FCI 1	FCI 2	FCI 3
	<b>51</b>	<b>75</b>	<b>63</b>	<b>301</b>
EXC	13	6	10	71
TB	13	14	14	80
B	14	15	15	49
AB	5	14	7	36
NC	6	26	17	65
	51	75	63	301

## RCI ANNEE 2011

<b>121</b>	CONCOURS INSCRITS AU CALENDR.
<b>93</b>	CONCOURS ENREGISTRES
<b>12</b>	BC + SELECTIONS TRACEURS et HA
<b>0</b>	SANS RAPPORT SUR LE CONCOURS
<b>7</b>	ANNULES

### ENGAGES PAR CATEGORIE 2010

<b>1266</b>	CERT	RCI 1	RCI 2	RCI 3
	<b>230</b>	<b>258</b>	<b>212</b>	<b>566</b>
EXC	24	12	4	9
TB	59	38	47	140
B	75	101	84	266
AB	16	33	20	42
NC	56	74	57	109
	230	258	212	566

<b>510</b>	CERT	FCI 1	FCI 2	FCI 3
	<b>46</b>	<b>64</b>	<b>51</b>	<b>349</b>
EXC	12	8	10	77
TB	16	15	12	125
B	7	17	12	65
AB	10	8	7	19
NC	1	16	10	63
	46	64	51	349

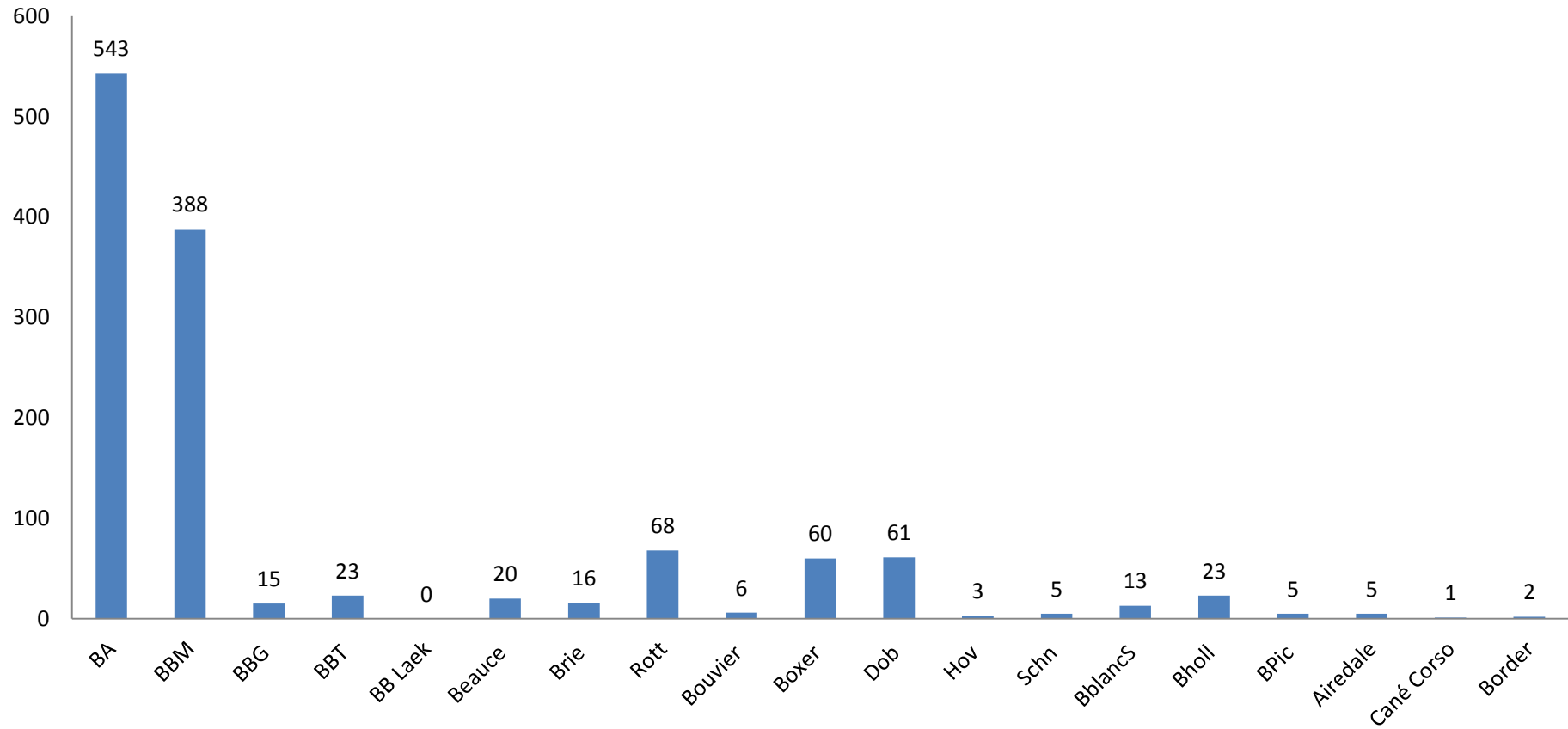
## COMPARATIF

<b>0</b>	CONCOURS INSCRITS AU CALENDR.
<b>-8</b>	CONCOURS ENREGISTRES
<b>7</b>	BC + SELECTIONS TRACEURS et HA
<b>-13</b>	SANS RAPPORT SUR LE CONCOURS
<b>0</b>	ANNULES

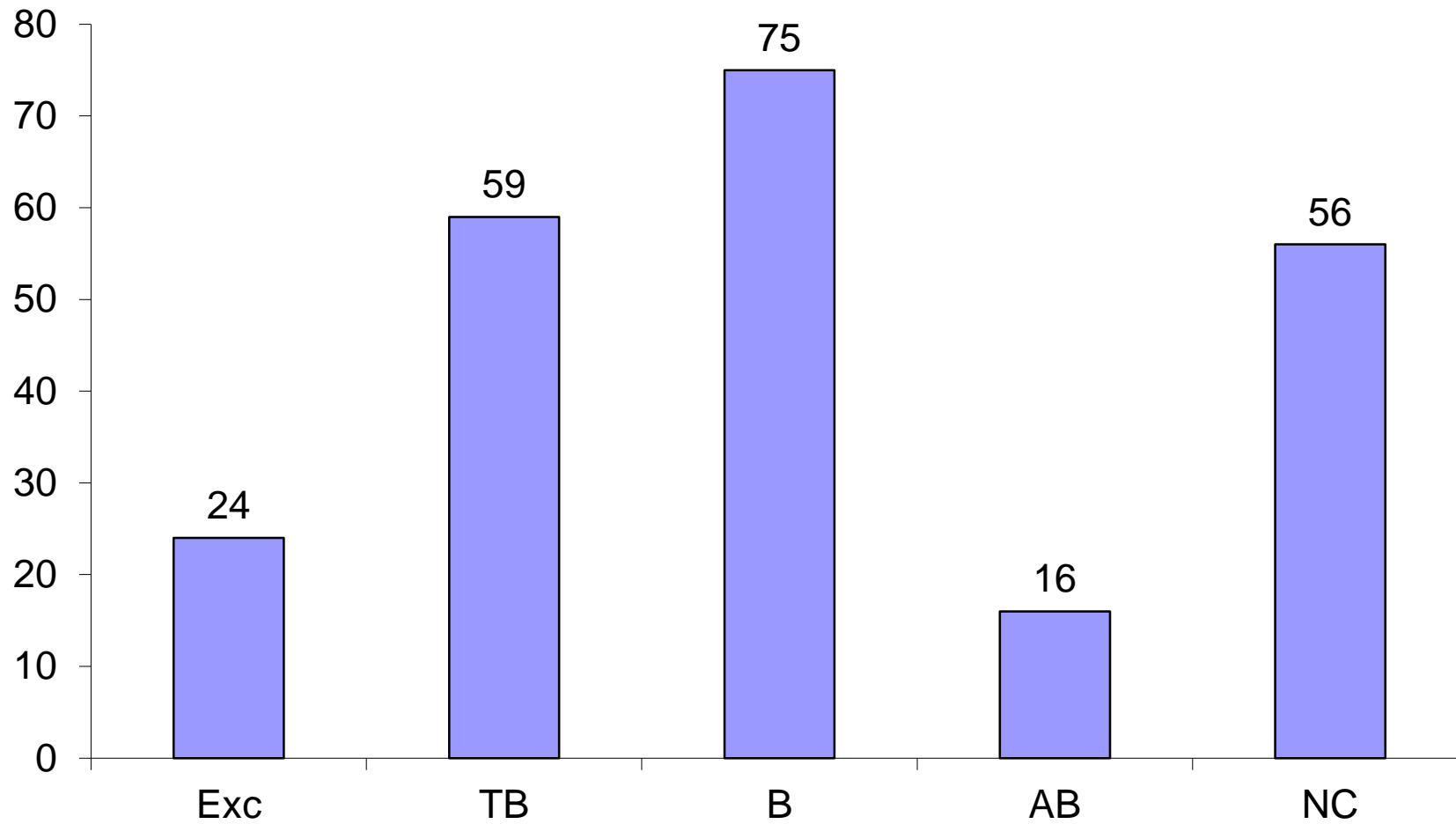
<b>-82</b>	CERT	RCI 1	RCI 2	RCI 3
	<b>-9</b>	<b>-75</b>	<b>-4</b>	<b>6</b>
EXC	<b>1</b>	<b>1</b>	<b>2</b>	<b>-5</b>
TB	<b>-6</b>	<b>-30</b>	<b>-1</b>	<b>-19</b>
B	<b>-7</b>	<b>-31</b>	<b>-14</b>	<b>-5</b>
AB	<b>-5</b>	<b>-1</b>	<b>-6</b>	<b>17</b>
NC	<b>8</b>	<b>-14</b>	<b>15</b>	<b>18</b>
	-9	-75	-4	6

<b>11</b>	CERT	FCI 1	FCI 2	FCI 3
			<b>-11</b>	<b>-12</b>
EXC		<b>2</b>	<b>0</b>	<b>6</b>
TB		<b>1</b>	<b>-2</b>	<b>45</b>
B		<b>2</b>	<b>-3</b>	<b>16</b>
AB		<b>-6</b>	<b>0</b>	<b>-17</b>
NC		<b>-10</b>	<b>-7</b>	<b>-2</b>
		<b>-11</b>	-12	48

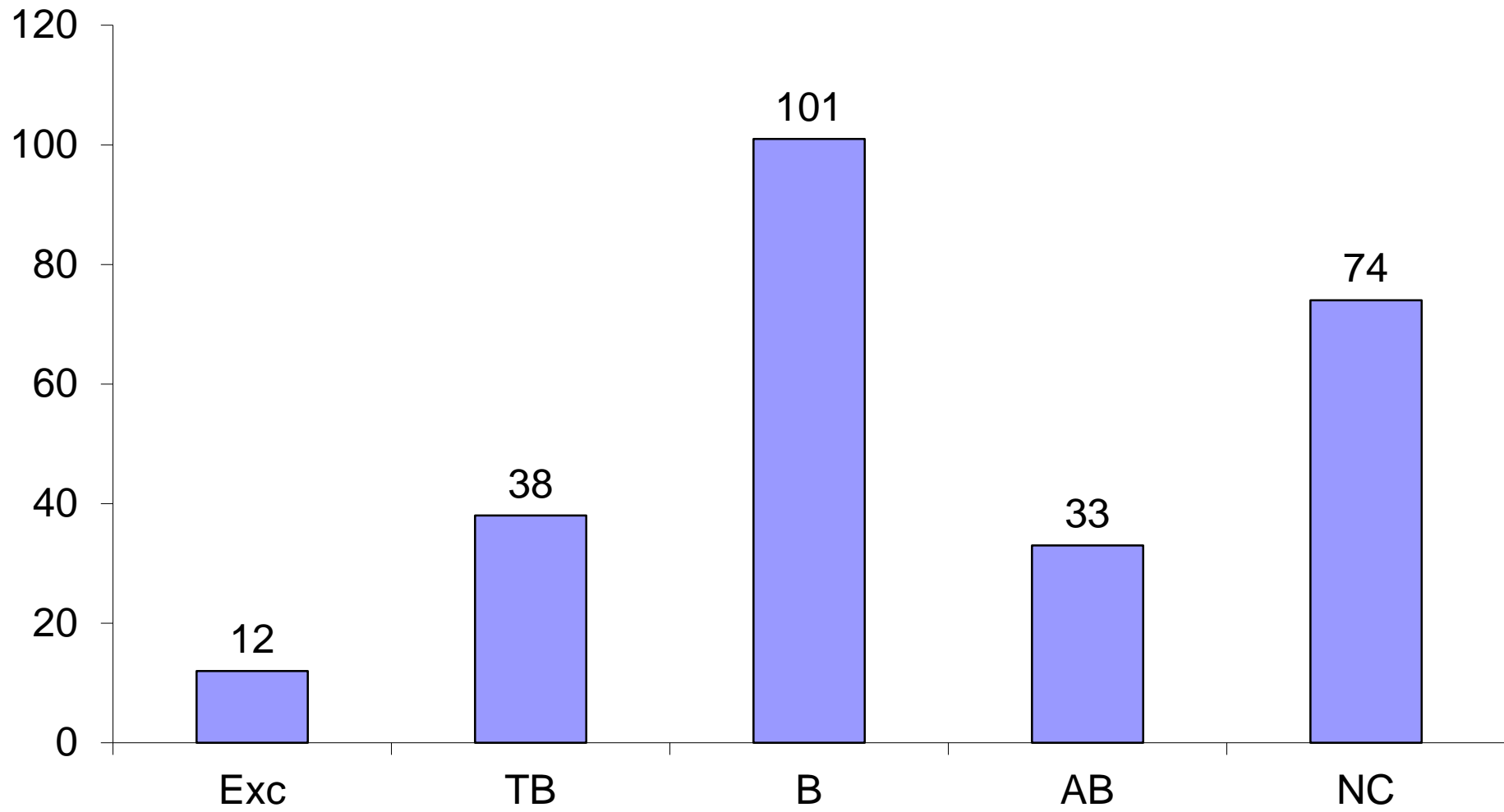
## RACES EN RCI 2011



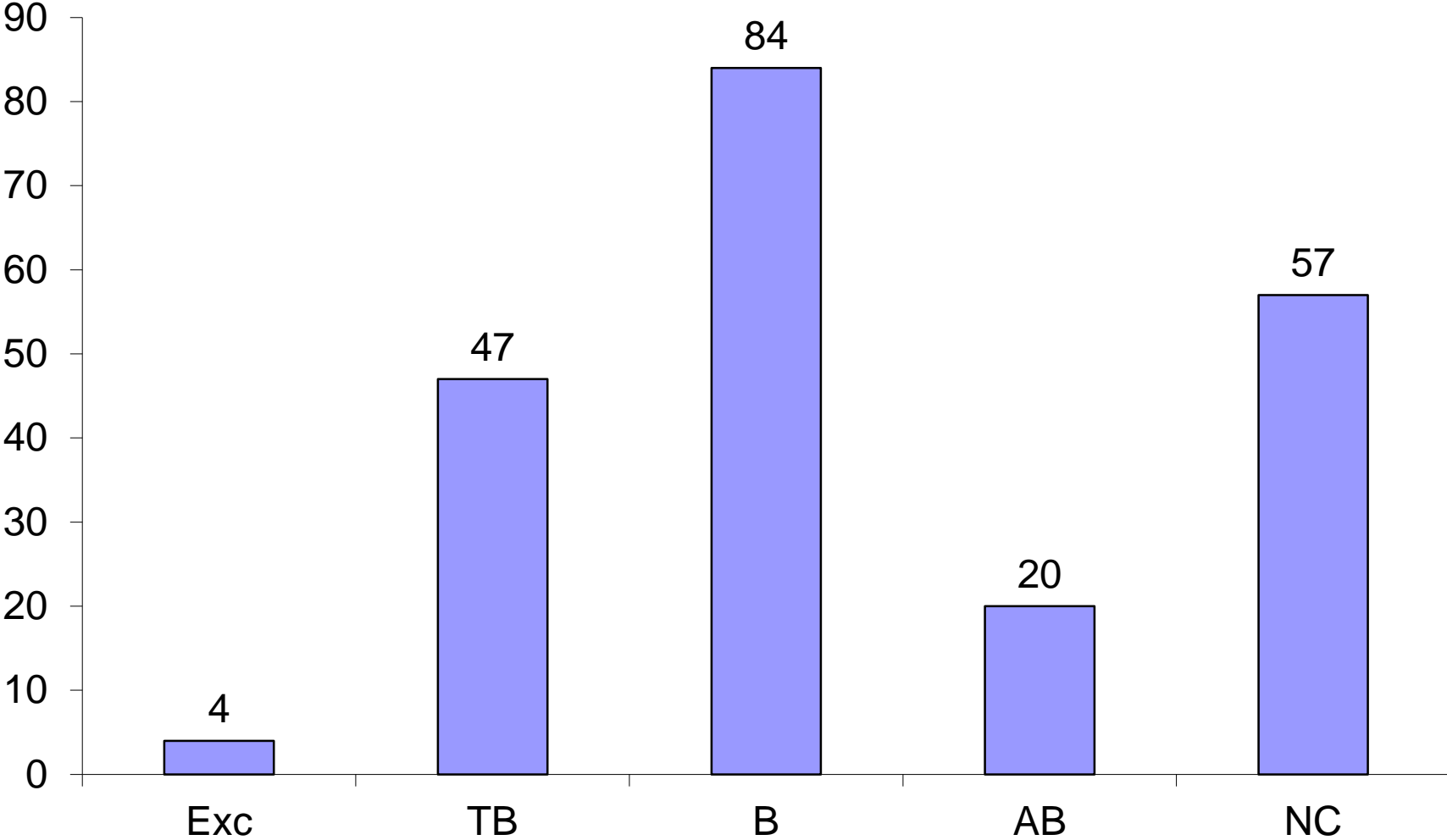
## QUALIFICATIF CERTIFICAT RCI



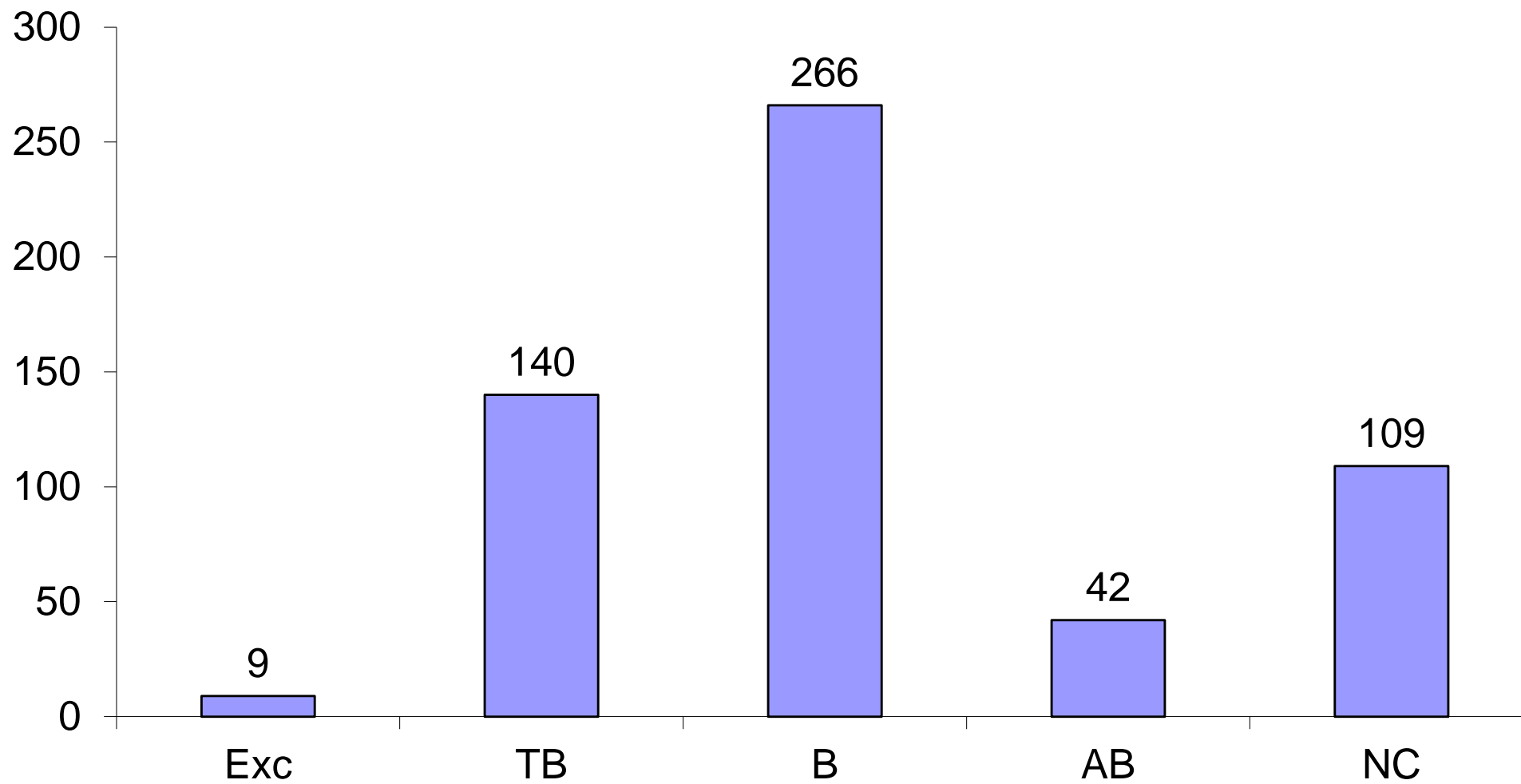
# QUALIFICATIF RCI I



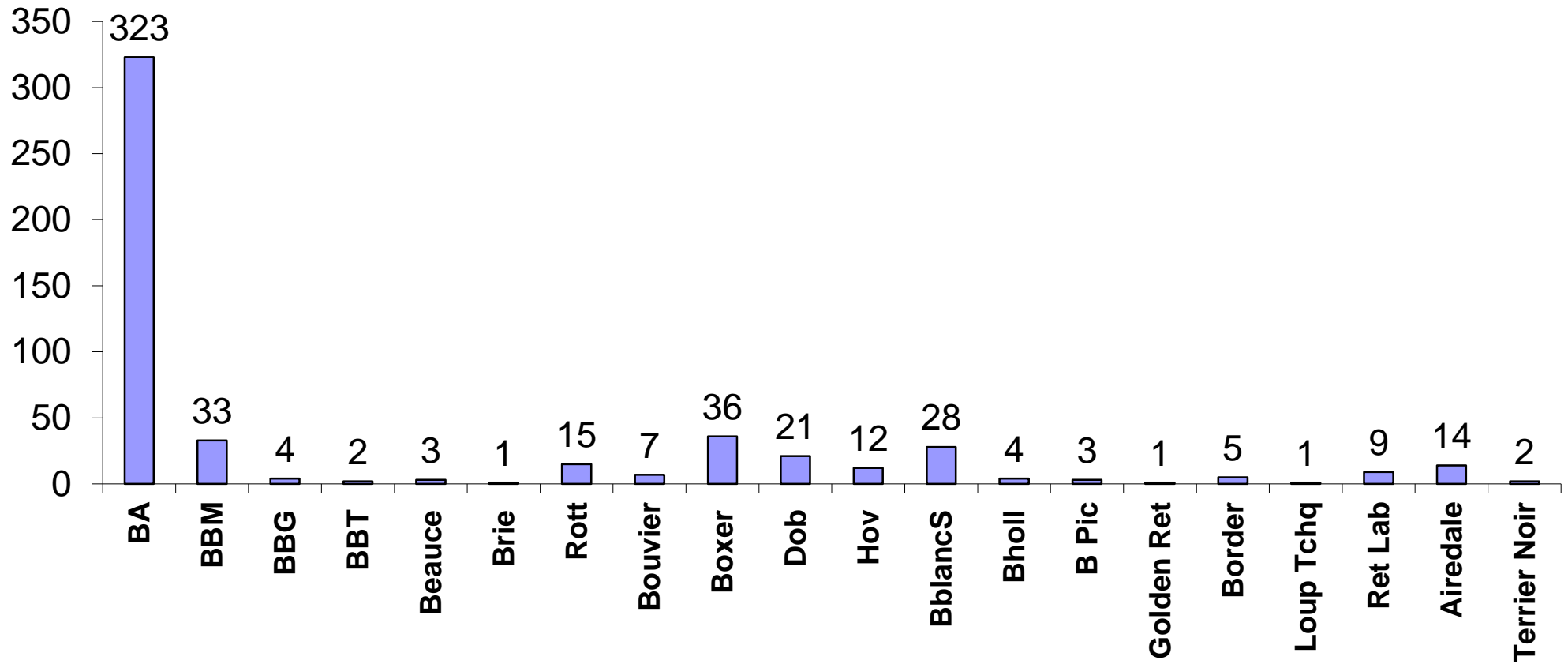
# QUALIFICATIFS RCI II



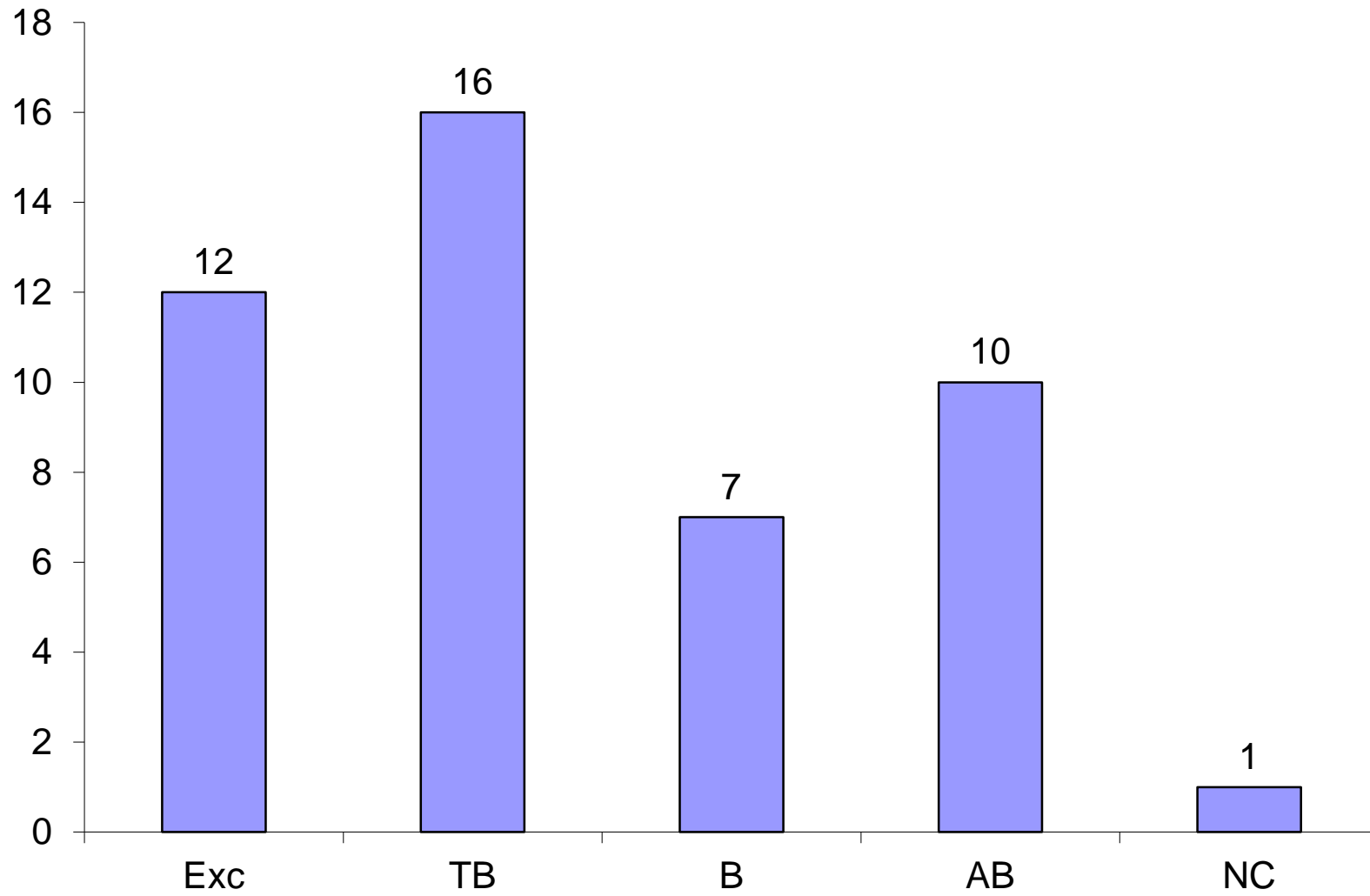
# QUALIFICATIFS RCI III



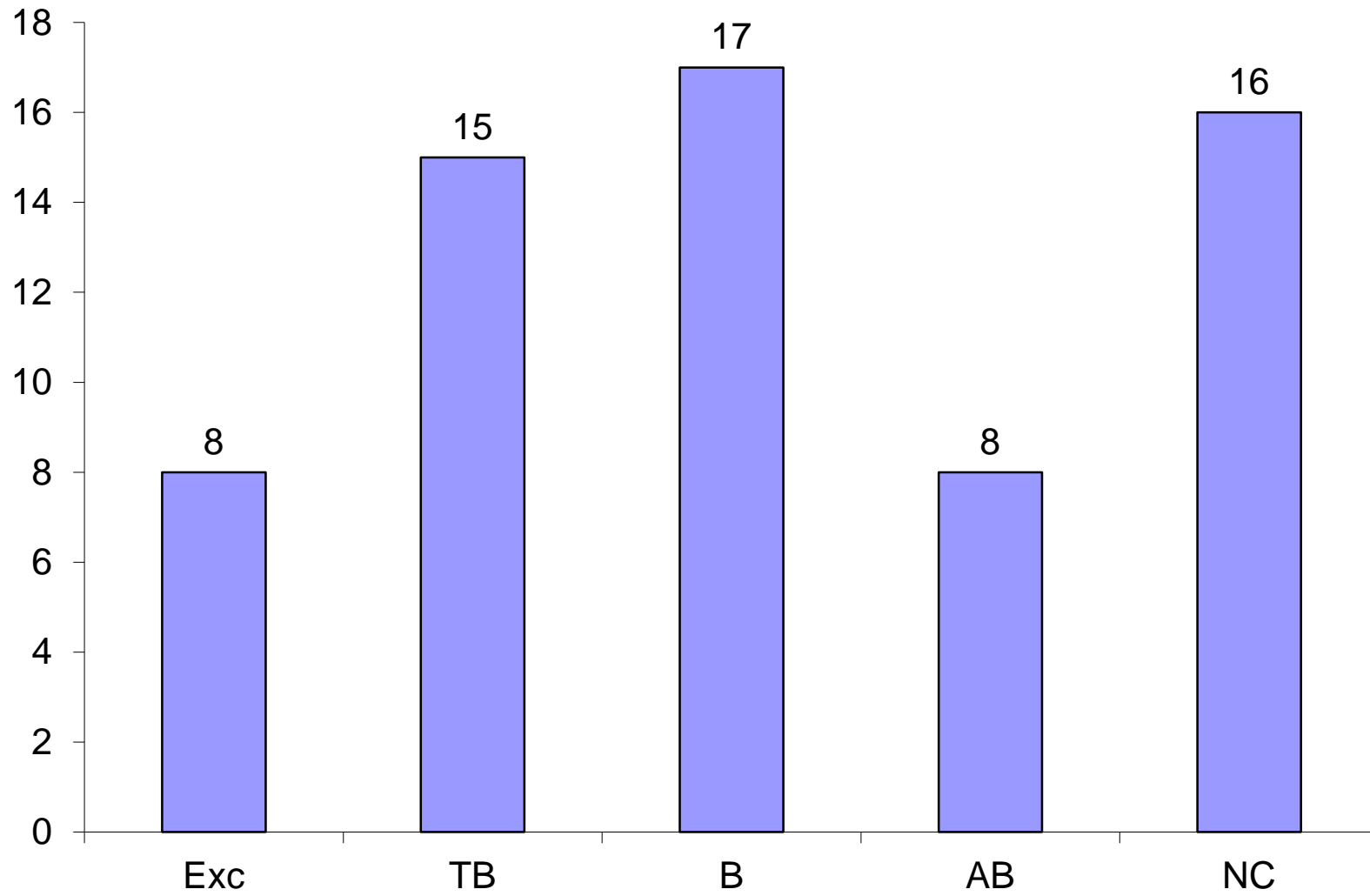
## RACES EN FCI



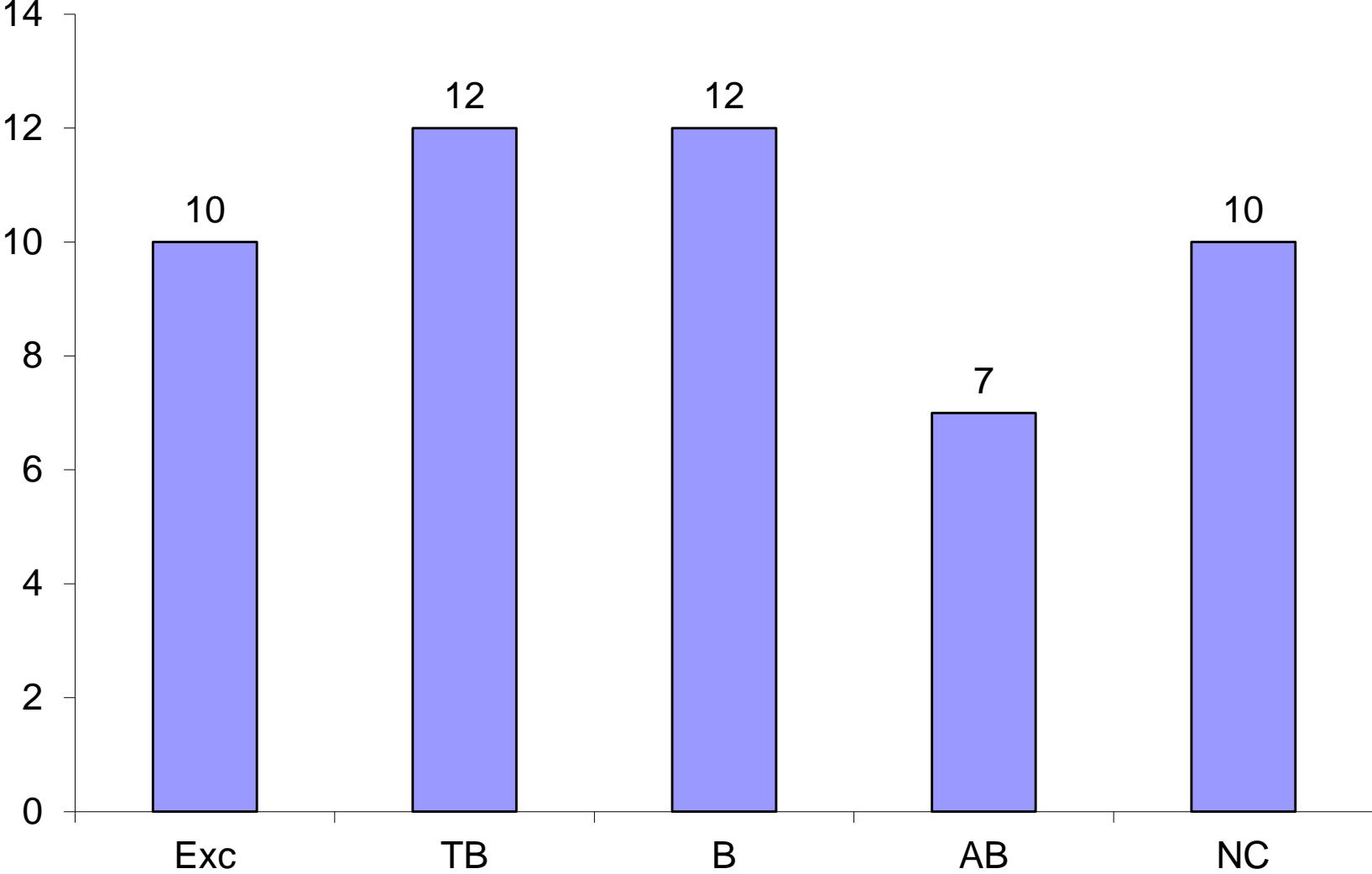
# QUALIFICATIFS CERTIFICAT FCI



# QUALIFICATIFS FCI I



# QUALIFICATIFS FCI II



# QUALIFICATIFS FCI III

